

# Configuration for MacOS (TCP/IP+Remote Access)

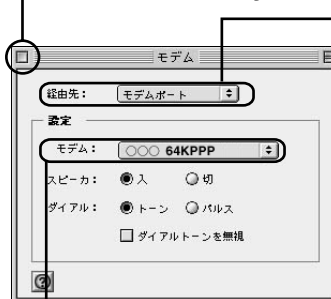
## 1 Configuration for Flet's·ISDN

- 1** At the beginning, confirm the configuration of the modem.



- Select [アップルマーク](Apple Mark) → [コントロールパネル](Control Panel) → [モデム](Modem).

- ③ Close this dialog box

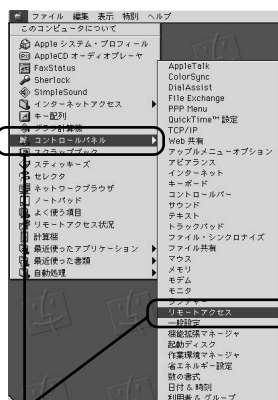


- ① Select the port in the pull down list of [経由先:(Routing Adapter:)], which is connected your computer and the Flet's Terminal Adapter. If the TA is connected with the USB cable, the model name of the Terminal Adapter may be displayed here.

Attention!

Note: Select [モデム:] (Modem:) which supports synchronous 64Kbps. (Select the modem, to be concrete, of which description is showed as 64KPPP or SYNC115. Do not select ASYNC. The Terminal Adapter does not support the asynchronous transmission. ※ If an applicable option is not displayed, install CCL file in compliance with the Terminal Adapter user manual.

- 2** Configuration of TCP/IP + Remote Access



- Select [アップルマーク](Apple Mark) → [コントロールパネル](Control Panel) → [リモートアクセス](Remote Access).

Attention!

① Type your user name (authentication ID and log in ID etc.) and domain name in the field [名前](Name). For the provider domain names, see separated sheet "Provider Domain Names".



- ② Type your password authorized by the provider in the field [パスワード](Password).

③ Type any access point (a dial-up number) in the field [電話番号](Dial-up Number), which was presented on the "Information of Start of Service" separately provided by NTT East Corporation.

Attention!

\*Connections to any number except the access number (dial-up number) presented in the separated sheet are out of Flet's-ISDN service, and they are separately charged at ordinary communication rates.

- 3** After the step 2, select [リモートアクセス] (Remote Access) → [TCP/IP]



- ① Select [PPP] in the pull down list of [経由先:] (Routing Adapter:).

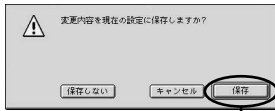


- ② Select [PPPサーバ](PPP Server) in the pull down list of [設定方法:] (Configuration:).

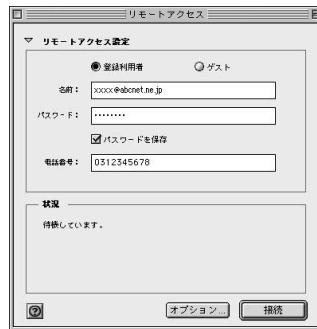
③ Type [ネームサーバアドレス:] (Name Server Address:) and [検索ドメイン名:] (Routing Domain Name:). As the setting values for [ネームサーバアドレス] (Name Server Address) and [検索ドメイン名] (Routing Domain Name) are dependent on the values unique to the each selected provider, enter the values advised by the provider. After filling all the fields, close this dialog box.

4

Return to this dialog box.

Then select [ファイル](File)  
→ [設定](Configuration).

Message [設定を保存しますか?]  
(Do you save this configuration?)  
appears. Click [保存](save) button.

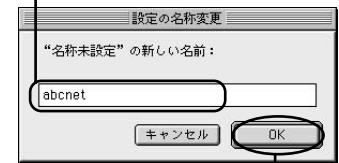
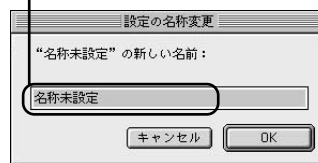
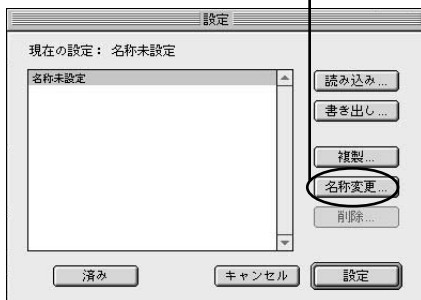


5

Click [名前変更](Change Name).

Type any simple name of your option.

For example, types [abcnet] here.



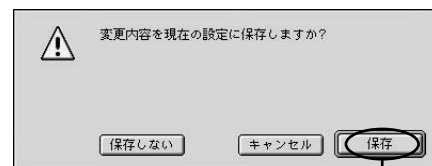
Click [OK].

6

[abcnet] is registered and displayed in this field.



Click [設定](Done)



Message [設定を保存しますか?](Do you save this  
configuration?) appears. Click [保存](save) button.

Setting Complete!

# Configuration for MacOS (TCP/IP+Remote Access)

## 2 Connection to the Internet

1 Return to this dialog box.



Connection established!

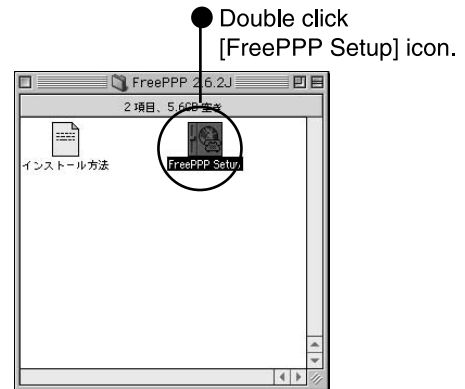
● Click [接続](Connection).

# Configuration for MacOS (TCP/IP+FreePPP)

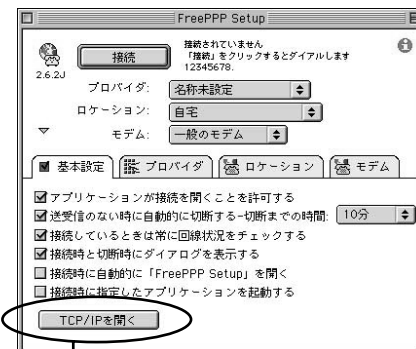
## 1 Configuration of Flet's·ISDN

※In this section, we describe on the assumption that FreePPP2.6.2J has been already set in your Mac.  
※Install FreePPP2.6.2J in your Mac.

1 Open the folder of Free2.6.2J

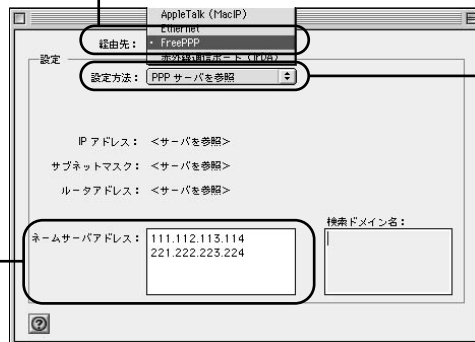


2 Click [ > ].

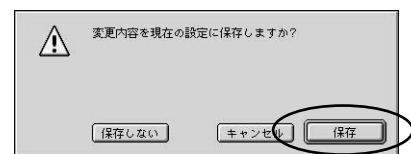


Click [TCP/IPを開く](Open TCP/IP).

3 Select [FreePPP] in the pull down list of [経由先:] (Routing Adapter:).



2 Select [PPPサーバを参照] (Complied with PPP Server) in the pull down list of [設定方法:] (Configurinin).



Message [設定を保存しますか?] (Do you save this configuration?) appears. Click [保存](save) button.

3

4

# Configuration for MacOS (TCP/IP + FreePPP)

4

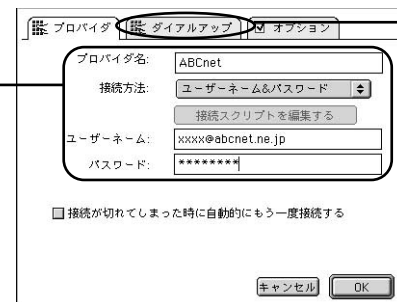
- Select [新しいプロバイダ](New Provider) in the pull down list of [プロバイダ](Provider).



Attention!

- Type a simple name of your option in the field [プロバイダ名](Provider Name).
- Select [ユーザーネーム&パスワード](User name & Password) in the pull down list of [接続方法](connection method).
- Type your user name (authentication ID and log in ID etc.) and domain name in the field [ユーザーネーム](User Name). For the provider domain names, see separated sheet "List of domain names of ISPs".

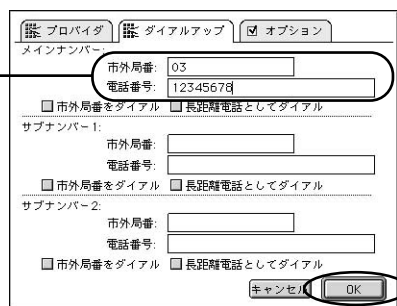
- Type the password authorized by the provider in the field [パスワード](Password).



- After filling all the fields, click [ダイヤルアップ](Dial-up) tab.

5

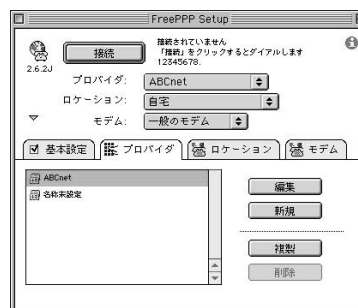
- Type your toll number in the field [市外局番:](Toll number).
- Type any access point (a dial-up number) in the field [電話番号] (Dial-up Number), which was presented on the "Service Initiation Notice" separately provided by NTT East Corporation.



- Click [OK] button.

※Connections to any number except the access number (dial-up number) presented in the separated sheet are out of Flet's-ISDN service, and they are separately charged at ordinary communication rates.

Return to this dialog box. The next step is the configuration of the modem.



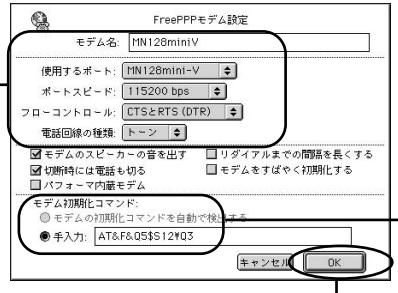
6

- Select [新しいモデム](New Modem) from the pull down list [モデム](Modem).



7

- ① Type any simple name of your option in the field of [モデム名](Modem Name).  
※ It is recommended to type your model name.
- ② Select [モデムポート](Modem Port) connected with TA or [プリンタポート](Printer port) in the field of [使用するポート](Port to be assigned).  
※ If the TA is connected with the USB cable, the model name of the Terminal Adapter may be displayed here.
- ③ Select [115200bps] in the pull down list of [ポートスピード](Port Ratio).
- ④ Select [CTSとRTS (DTR)](CTS & RTS (DTR)) in the pull down list of [フローコントロール](Flow Control).
- ⑤ Select [トーン](Tone) in the pull down list of [電話回線の種類](Type of a Telephone line).



Attention!

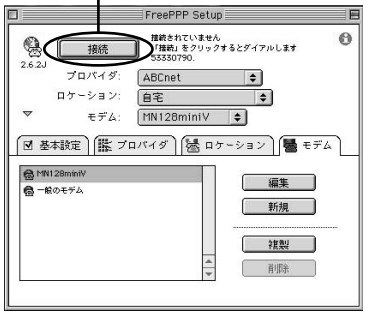
Check [手入力](Manual Input) radio button in the area of [モデム初期化コマンド](Command to Initialize a Modem) and type [同期64Kの初期化コマンド](Synchronous 64K Initialization Command) in the field at the right side of the radio button. (See a user manual of each TA.)  
※ The command [AT&F&Q5S12\Q3] showed in this sample dialog is of [MN128miniV].

⑦ After the selection, click [OK].

Setting Complete!

## 2 Connection to the Internet

Return the dialog box showed below.  
Click [接続](Connect) button.



- ① After the connection is established, this button name changes to [切断](Disconnect).
- ② At this area, the accumulated connection time is displayed.



Connection established!