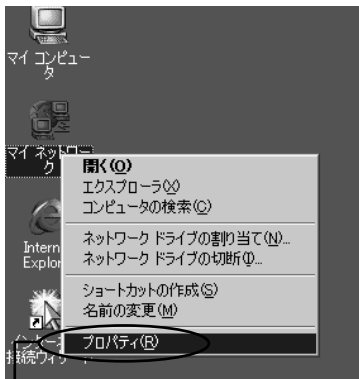


1 Settings for Flet's-ISDN

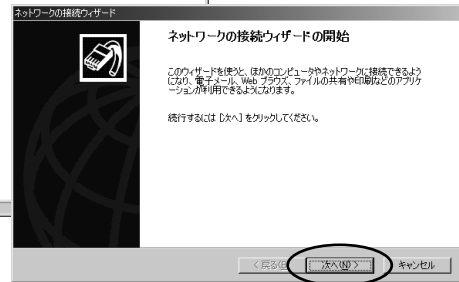
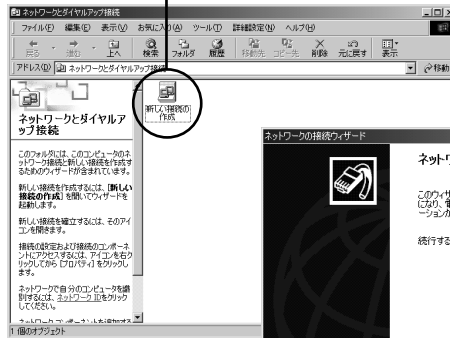
※Make sure that your TA is set at "Synchronous 64kbit/s".

1



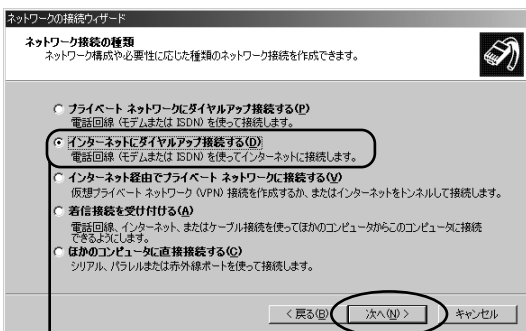
Place the pointer on **マイネットワーク (My Network)** icon, and right-click on it to select **[プロパティ] (Properties)** from the drop down menu.

1 Double click on **[新しい接続の作成] (Make New Connection)** icon.

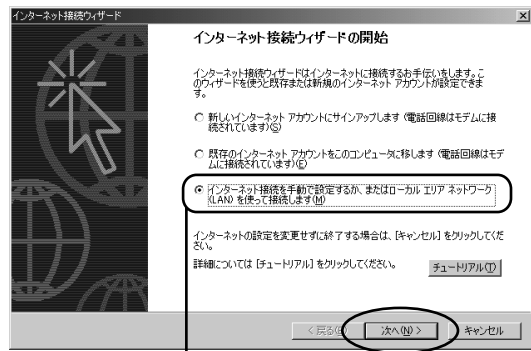


2 Click **[次へ] (Next)**.

2

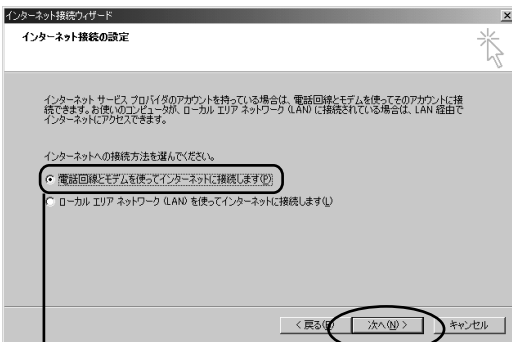


Select **[インターネットにダイヤルアップ接続する] (Dial-up to the Internet)** and click **[次へ] (Next)**.

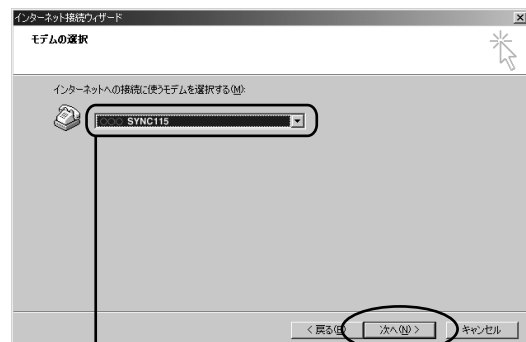


Select **[インターネット接続を手動で設定するか、またはローカルエリアネットワーク (LAN) を使って接続します] (M)** (I want to set up my Internet connection manually, or I want to connect through a local area network (LAN).) and click **[次へ] (Next)**.

3



Select **[電話回線とモデムを使ってインターネットに接続します] (M)** (I connect through a phone line and a modem) and click **[次へ] (Next)**.



Attention!

Check that **[モデムの選択] (Modem selection)** indicates the information of the TA to be used. (A TA compliant with synchronous 64 kbps (with an indication of 64K, SYNC115, etc.) must be selected.)
 ※When no relevant TA is on the pull-down list, refer to the manual of the TA to install the driver onto your PC.

Settings on Windows 2000 Professional

4 **Attention!**

1 Type the access number (dial-up number) presented from NTT East on "Service Initiation Notice."
*Some ISPs require you to add "186" prefix number before your dial-up number. Uncheck [国番号と市外局番を使う] (Use country code and area code). Contact your ISP for details.

2 Click [詳細設定] (Advanced settings).

*Flet's・ISDN service covers only connections to the access number (dial-up number) specified in "Service Initiation Notice, and connections to any other numbers are separately charged at ordinary communication rates.

1 Make sure that [PPP] is selected for [接続の種類] (Connection type).

2 Make sure that [なし] (None) is selected for [ログオンの手続き] (Logon procedure).

3 Next, select [アドレス] (Addresses) tab.

5

1 Make sure that [インターネットサービスプロバイダによる自動割り当て] (Internet service provider automatically provides one) is selected for [IPアドレス] (IP address).

2 Settings for [ISPによるDNSアドレスの自動割り当て] (DNS server address) vary depending on the ISP. Follow the instruction provided by your ISP.

3 After finishing typing, click [OK].

Click [次へ] (Next).

6 **Attention!**

1 For [ユーザー名] (User name), type your username (authentication ID, login ID, etc.) registered at your ISP and the domain name. See "List of domain names of ISPs" separately provided for domain names.

2 For [パスワード] (Password), type your password registered at your ISP.

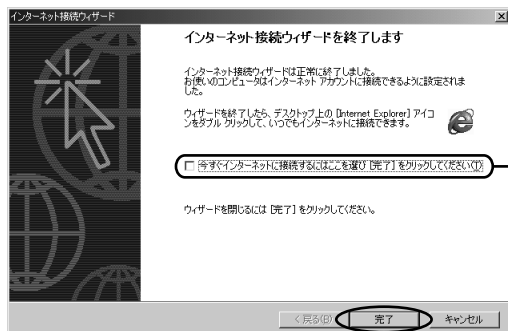
3 After typing, click [次へ] (Next).

Click [次へ] (Next).

It will take you to the screen for mail settings. From this, follow the instruction provided by your ISP.

7

When you skip the mail settings, or when you have finished the mail settings, you will see the following screen at the end.



1 Uncheck [今すぐインターネットに接続するにはここを選び完了をクリックしてください]
(To connect to the Internet immediately, select this box and then click Finish).

2 Click [完了](Finish).

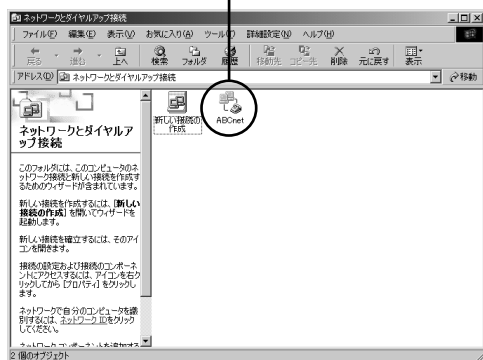
Setting Complete!

2

Connecting to the Internet

1

Double-click the connection icon created.



1 Check if [ユーザー名](User name) and [パスワード](Password) are correctly filled.



2 Click [ダイヤル](Dial) to make a connection.

2

With the connection established, you will find an icon looking like a PC in the taskbar status area.



Connection established!